



# OFFICE FOR LEASE

## 212 W. Foothill Blvd., Monrovia CA



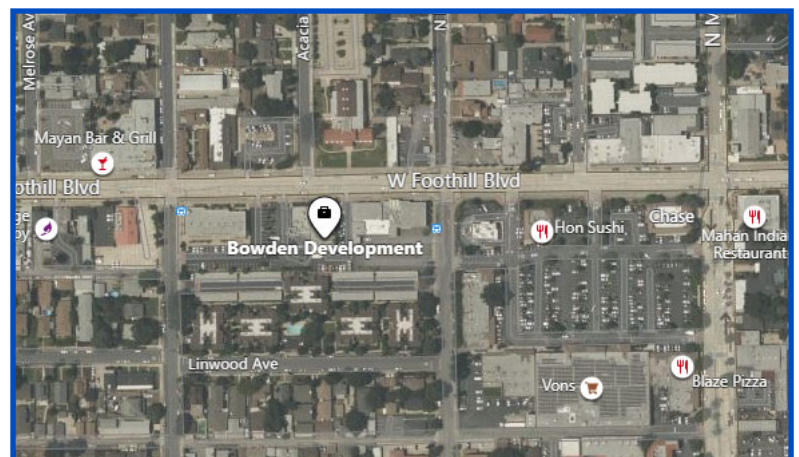
**Brian Deets**  
626.244.4743 Cell  
DRE #01800743  
brian@cibare.com

**Filippo Fanara**  
626.255.1124 Cell  
DRE 01198019  
flippo@cibare.com

830 S. Myrtle Ave.  
Monrovia, CA 91016  
Ph 626.303.1818

### Property Highlights

- 2 Office Spaces Available:
- Approx. 1,600 SF Office Space for \$2.00 PSF/ MG
- Approx. 1,539 SF Office Space for \$2.00 PSF/ MG
- Spaces can Also be Leased together: Approx 3,139 SF for \$1.85 PSF/ MG
- Centrally Located in Monrovia Around Shopping Amenities

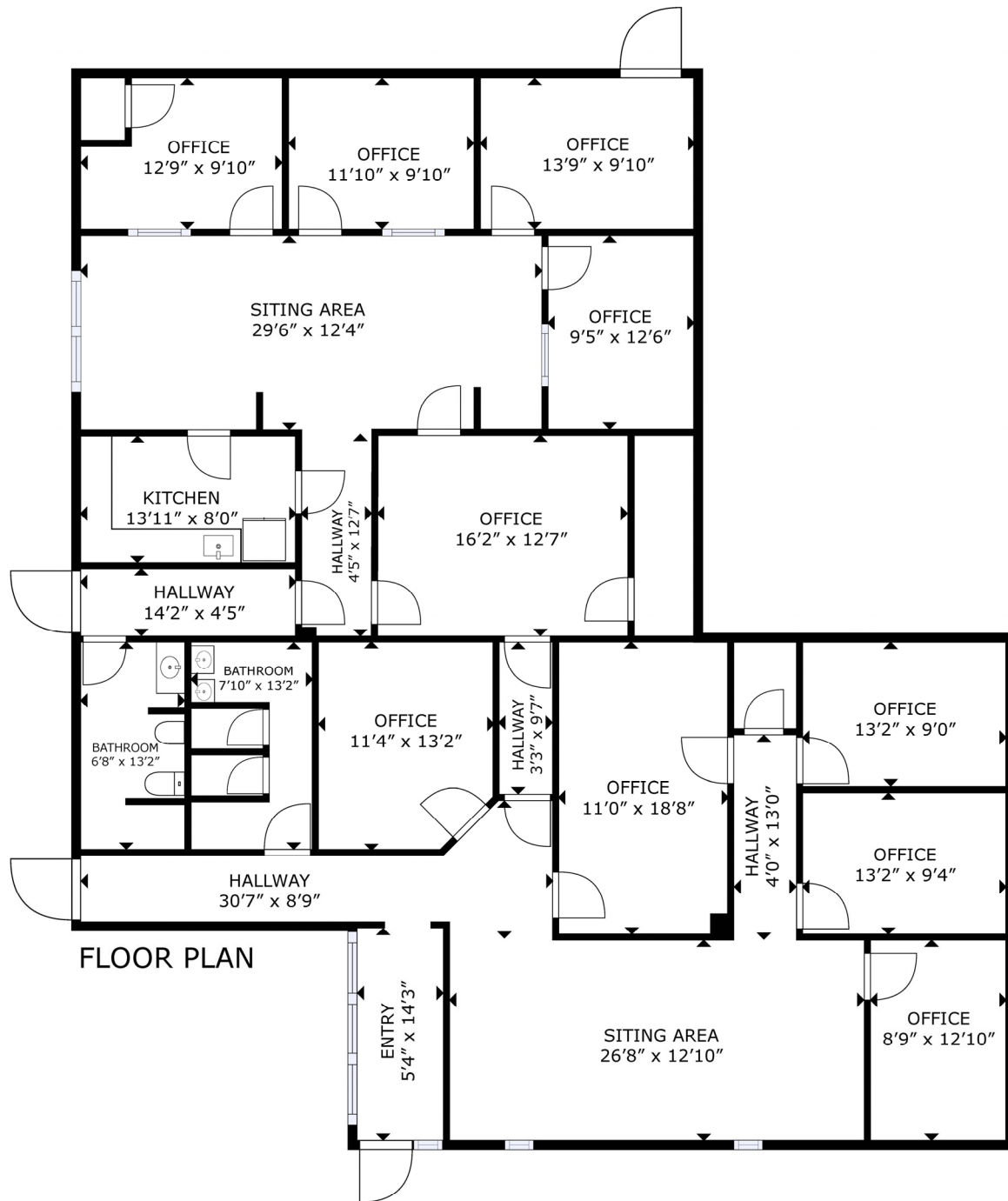


Shown by appointment only. Please  
call listing office to  
schedule an appointment.

"The information provided herein has been obtained from reliable  
sources but is not guaranteed to be accurate."

Like Us on Facebook! Follow Us on Twitter!





GROSS INTERNAL AREA  
FLOOR PLAN: 3,058 sq. ft  
SIZES AND DIMENSIONS ARE APPROXIMATE, ACTUAL MAY VARY.