



Warehouse+Office FOR LEASE

1800 S. Myrtle Ave.
Monrovia, CA 91016



Katelyn Mejia
DRE # 02069096
(626) 241-2775 cell
(626) 346-1908 direct
katie@cibare.com

Alfredo Mejia
DRE # 01340251
(626) 841-0599 cell
(626) 246-6610 direct
alfredo@cibare.com

830 S. Myrtle Ave.
Monrovia, CA 91016
Office (626) 303-1818
cibarealestate.com
DRE #01198019

Property Highlights

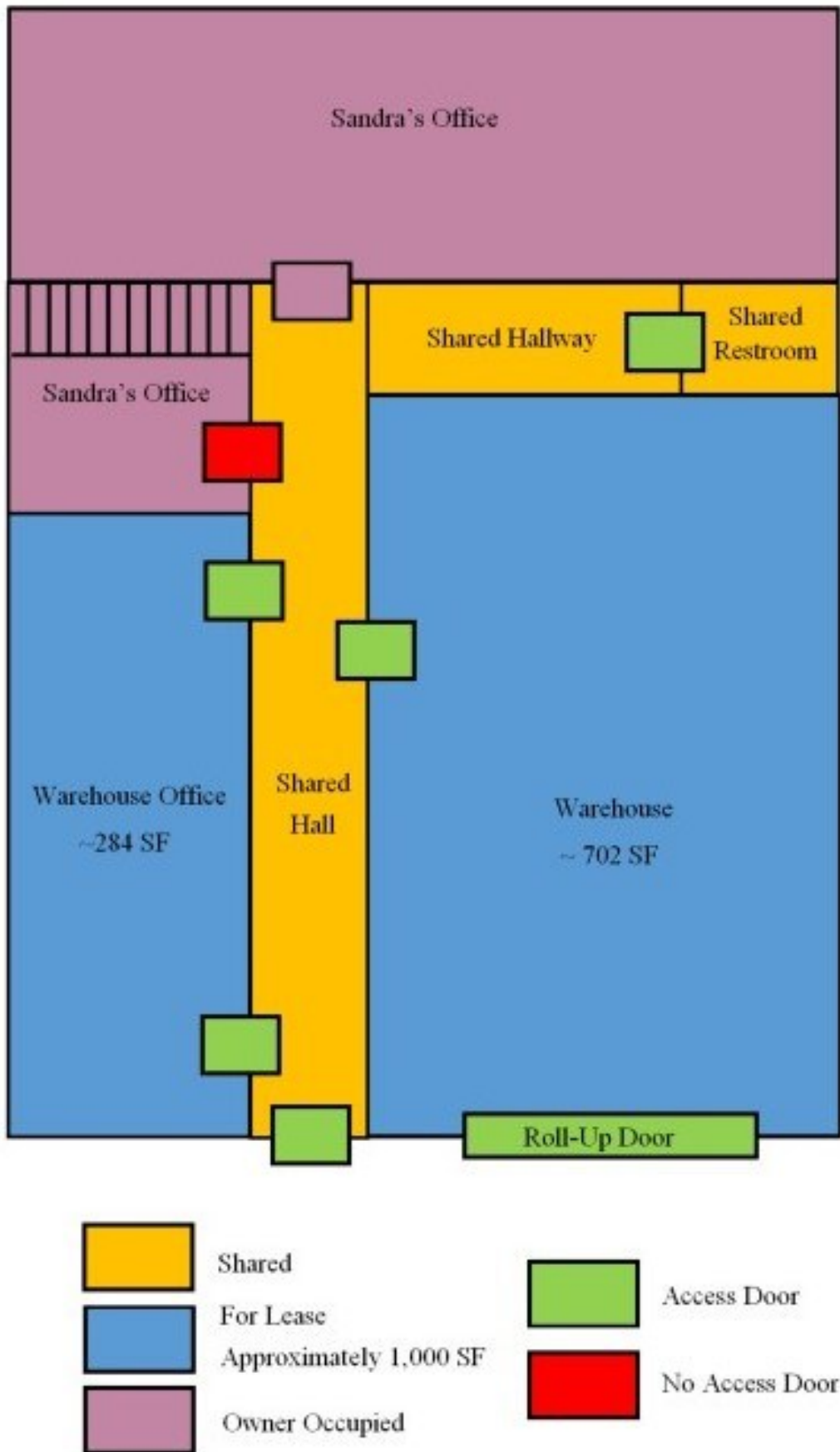
- Approximately 1000 SF including ~700 SF of Warehouse
- Roll-up door in Warehouse
- Air Conditioned Office
- Parking in Rear Off of Myrtle Ave.
- Across from Monrovia Gold Line Station
- Near 210, 605, and 10 Freeways
- Asking \$1300/Month Modified Gross
- Available Starting May 1, 2023
- Call Now for More Information!
- Check Out the Virtual Tour:
<https://my.matterport.com/show/?m=X96QAYH7jyq>

Like Us on Facebook! Follow Us on Twitter!



Duarte Rd.

Myrtle Ave.



Sketch not to scale.