

**1949, 1961, & 1965 S. Myrtle Ave., Monrovia, CA 91016**



**Filippo Fanara**  
DRE License 01198019  
filippo@cibare.com  
626.255.1124 Cell

**Gina Fanara**  
DRE License 01805710  
gina@cibare.com  
626.818.3283 Cell

316 W. Foothill Blvd.  
Monrovia, CA 91016  
Ph 626.303.1818  
cibarealestate.com  
Broker Lic #01198019

## Property Highlights

- Three Different Office/Warehouse Suites Available For Lease
- All Units Located in a Multi-Tenant Industrial Complex
- 1949: Approximately 1,600 SF Suite—450 SF Office, 1,150 SF Warehouse with Ground Level Door
- 1961: Approximately 800 SF Office Suite with A/C
- 1965: Approximately 3,361 SF Warehouse with Ground Level Door, 1,903 SF Mezzanine, and 6,620 SF Outdoor Storage Area
- Asking Lease Rates: 1949 = \$1.70/SF MG; 1961 = \$2.00/SF MG; 1965 = \$1.60/SF Warehouse, \$0.85/SF MG Mezzanine, \$0.45/SF Outdoor Storage Area
- 14-20 Ft Clear Height
- 400 Amps of Power for All Suites
- Dedicated Parking For Each Suite
- Easy Access to 210 & 605 Freeways
- Close to Monrovia Metro Train Station and Old Town Monrovia

Shown by appointment only. Please  
call listing office to  
schedule an appointment.

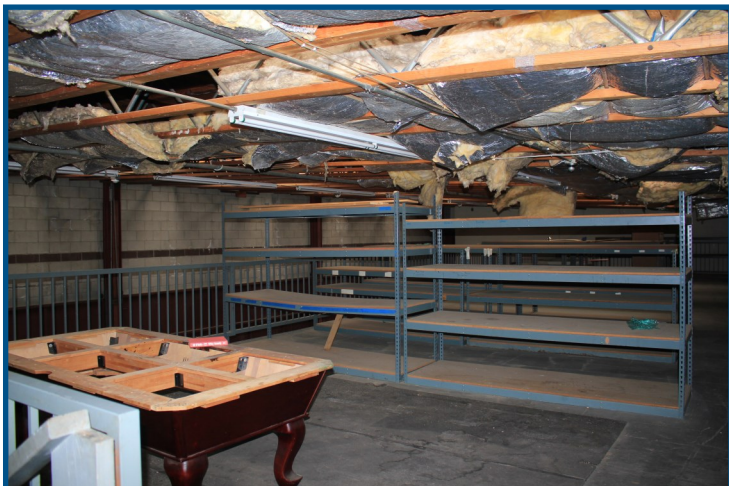
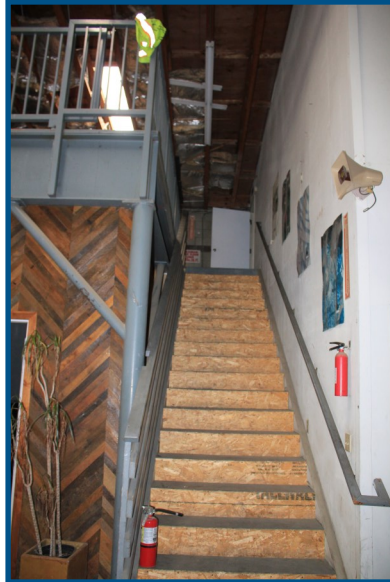
# FOR LEASE

1961 S. Myrtle Ave.





## 1965 S. Myrtle Ave. - Interior Photos





## 1965 S. Myrtle Ave. - Exterior Photos



## Maps & Aerials

